



diocese
of limerick
our catholic community



IRISH CATHOLIC
BISHOPS' CONFERENCE
COMHDHÁIL EASPAG CAITLICEACH ÉIREANN

Welcome to Briefing for Parishes

on

Framework Document for a Return to the Public Celebration of Mass and the Sacraments

Published by the Irish Episcopal Conference



diocese
of **limerick**
our catholic community

Getting ready to
begin again...



New Beginnings

Many if not all great undertakings begin in small and often hidden ways.

Seeds need the darkness, isolation and cover of the earth in order to germinate.

Therefore, for something to begin small, hidden, anonymous, is an advantage.

It means it can develop away from publicity. There are no pressures. No burden of expectations.

It can develop at its own pace. There is no hurry. Hurry ruins so many things.

Hence the importance of beginnings, of taking care of things in their beginning, of the small in the accomplishment of the great.



How did Christ begin his great work, the salvation of the world?

He began simply, quietly.

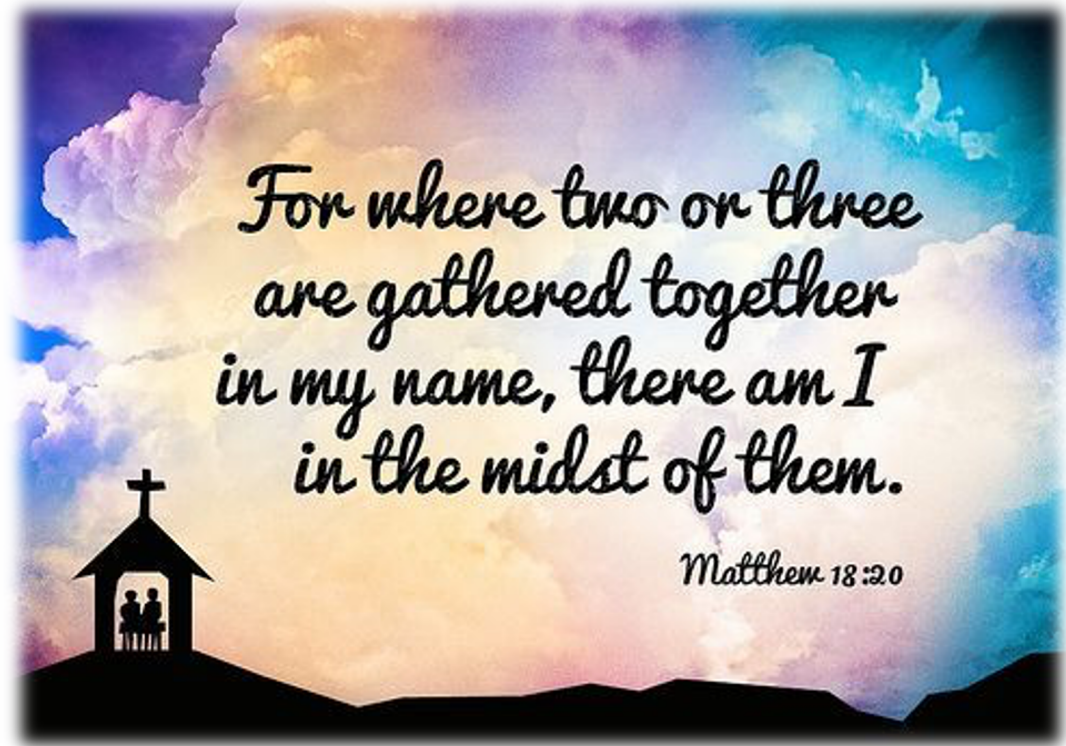
No fanfare. No fireworks.

No public launching.

He began by calling a few people – two in fact.

It was as simple as that.

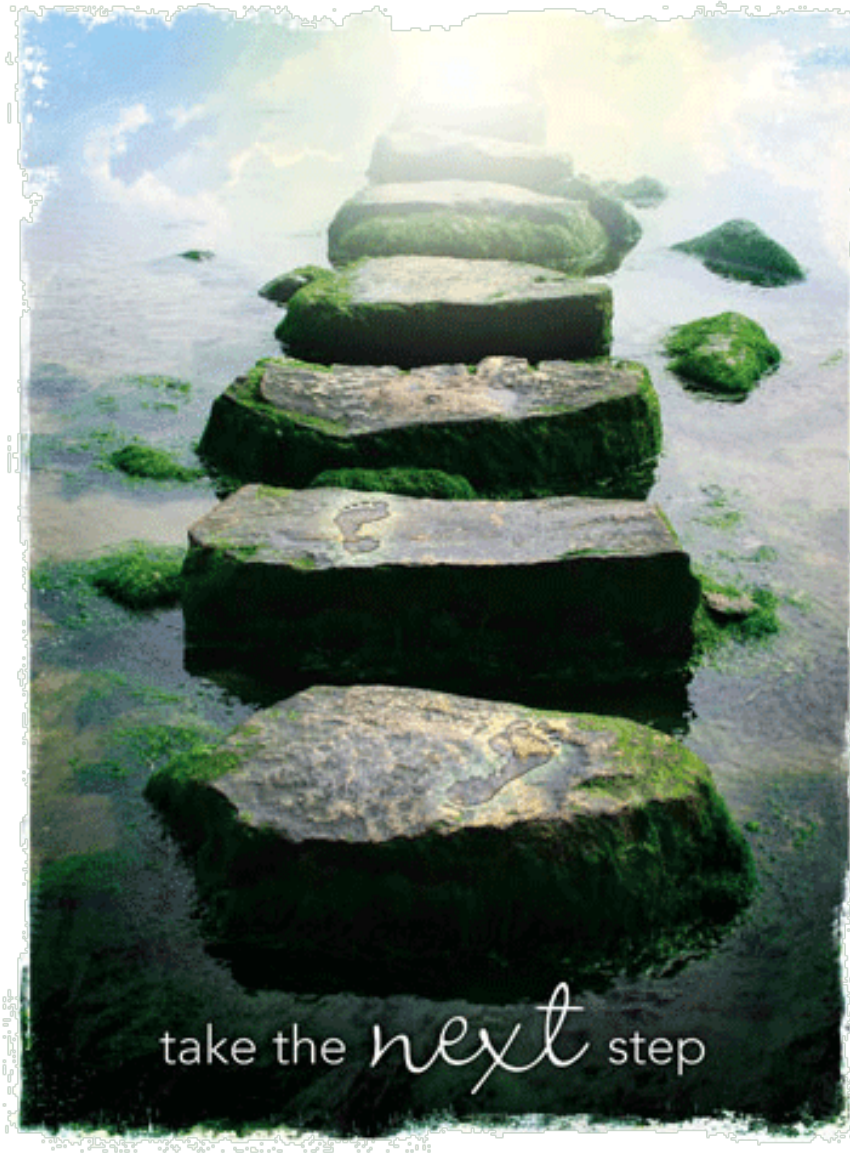
He began with personal contact and that is how his work developed. It was passed on from person to person by word of mouth.





We shouldn't be surprised at this. Things which begin with a splash often peter out.

Whereas those which begin quietly put down deep roots, grow steadily, and survive to produce fruits that last.



So, if there is something which we want to do, let us not hesitate and think too much.

Let us make a start, however small. Let us take one step. Let us plant one seed.

Let us trust that if our cause is good, God will support us, and it will grow and prosper.

Amen

Overview of Framework

INITIAL STEPS FOR PARISHES

Establish Covid-19 Support team

Identify volunteers

Provide induction and training

Secure signage, materials for cleaning /sanitising protection etc.

Physical (Social) Distancing

Maintenance of Hygiene

Liturgical Matters

Calculate potential capacity

Communicate & Manage

Cleaning & Monitoring Schedule

Empty all Holy Water fonts

Hand sanitisers

Cleaning of Ambo, Shrines Microphones

Signage, markings, cordoning

Advice, special needs & Stewarding

Cleaning of Door handles, seats...

Cleaning of Toilet facilities

- Dispensation extended
- Manage sanctuary area
- Limit music ministry & altar servers
- Simple Entrance, Recessional and no Offertory Processions
- Protocol for Holy Communion
- Protocol for Baptism
- Protocol for Anointing
- Protocol for Reconciliation

COMMUNICATION



Please Note:

- The **dispensation** for attendance at Sunday Mass **is still in place**.
- Guidelines should be read in conjunction with local 'Return to Work' protocols and insurance advice. Always follow public health advice.
- No Church should be opened for public prayer or worship until the parish is happy that all satisfactory arrangements, as indicated in the Framework Document, are in place.
- It is important that any people who are vulnerable or unwell, especially those with Covid-19 symptoms, should stay at home and participate in liturgies through online means. The same applies to those who have been in contact with someone who has the virus, in accordance with public health advice.



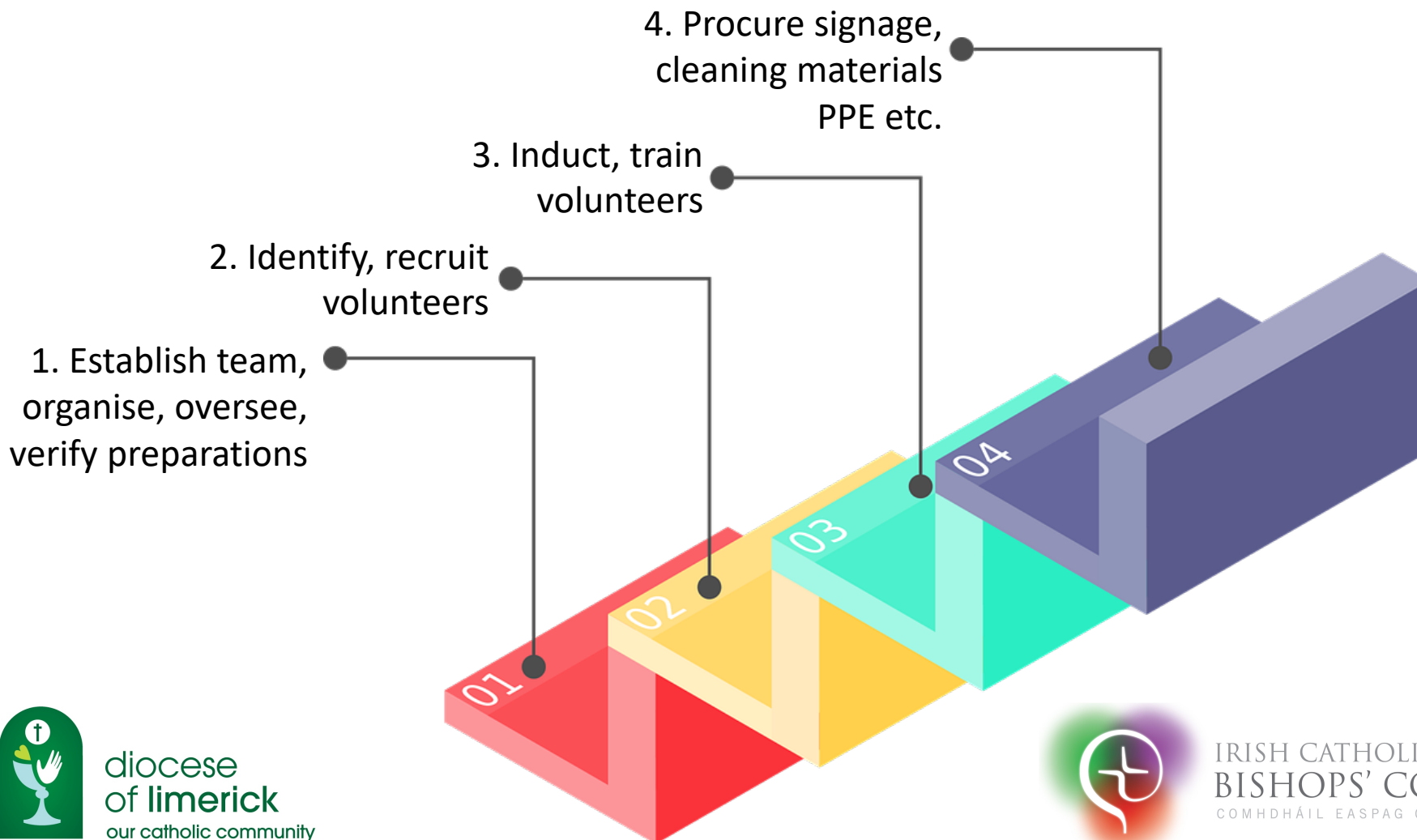
INITIAL STEPS FOR PARISHES

Establish Covid-19
Support team

Identify volunteers

Provide induction
and training

Secure signage,
materials for
cleaning /sanitising
protection etc.



diocese
of **limerick**
our catholic community



IRISH CATHOLIC
BISHOPS' CONFERENCE
COMHDHÁIL EASPAG CAITLICEACH ÉIREANN

INITIAL STEPS FOR PARISHES

Establish Covid-19
Support team

Identify volunteers

Provide induction
and training

Secure signage,
materials for
cleaning /sanitising
protection etc.

| ACTION | CONFIRM / COMMENT |
|---|-------------------|
| <p>1. Establish a Covid-19 Support Team of parishioners to organise preparations and to oversee their implementation and verification. (the verification process may be assisted at Pastoral Area and/or Diocesan level)</p> | |
| <p>2. Identify volunteers to assist with the implementation and verification.</p> | |
| <p>3. Provide appropriate induction and training where necessary to priests, ministers, readers, employees and volunteers.</p> | |
| <p>4. Secure an appropriate supply of signage, cleaning/sanitising materials and accessories and items necessary for protection.</p> | |



A. Physical (Social) Distancing



A. Physical (Social) Distancing

Calculate potential capacity

Communicate & Manage

Signage, markings, cordoning

| ACTION | CONFIRM / COMMENT |
|---|-------------------|
| 5. Having considered the most up-to-date advice on physical distancing, what is the number of people that can be accommodated safely in each church? | |
| 6. How will this be managed? | |
| 7. How will this be communicated to the people? | |
| 8. Have we clearly indicated the areas in the church where people can sit (e.g. by closing off rows of seats, allowing one person to sit at the end of each free row while permitting those from the same household to sit together, etc.). | |



A. Physical (Social) Distancing cont.

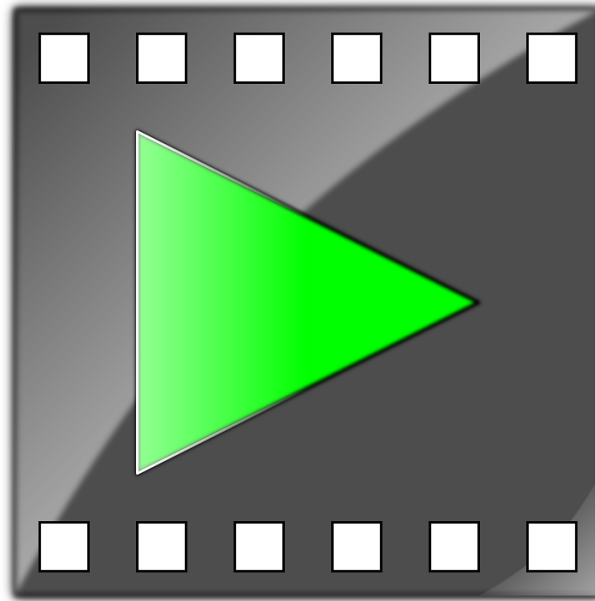
Signage, markings, cordoning contd.

Advice, Special Needs & Stewarding

| ACTION | CONFIRM / COMMENT |
|---|-------------------|
| 9. Have we stewards available, as necessary and appropriate, to assist people entering or leaving the church and to direct them to available seats? | |
| 10. Have we provided appropriate marking to help people to maintain physical distance, particularly when approaching for Holy Communion? | |
| 11. Have we taken account of the needs of people with disabilities? | |
| 12. Have we issued clear advice regarding people observing physical distancing while outside the church? | |
| 13. Is there appropriate signage to communicate these messages? | |



Social distancing video from Kilmallock





Points you may wish to post up in your Church(es):

- Do not enter if you have a cough or feel you could have a temperature.
- Sanitise your hands on entry and exit.
- Sit 2 metres from other Mass goers.
- Please follow the guidance of the stewards.
- If the Mass will be broadcast over a loudspeaker advise of same, some people may feel more comfortable to be outside.
- A line about the dispensation in relation to attending Sunday Masses
- Times of the Masses in the church on Sundays and weekdays
- Times of Masses in adjoining churches.

B. Maintenance of Hygiene

Coronavirus COVID-19



Help prevent coronavirus



Wash your hands



Cover mouth if coughing or sneezing



Avoid touching your face



Keep surfaces clean



Stop shaking hands and hugging



Keep a safe distance

The virus spreads in sneeze and cough droplets, so regularly taking the above measures helps reduce the chance of it spreading.

Visit [HSE.ie](https://www.hse.ie)

For updated factual information and advice
Or call 1850 24 1850

Protection from coronavirus.
It's in our hands.



Rialtas na hÉireann
Government of Ireland



diocese
of limerick
our catholic community



IRISH CATHOLIC
BISHOPS' CONFERENCE
COMHDHÁIL EASPAG CAITLICEACH ÉIREANN

B. Maintenance of Hygiene

Cleaning & Monitoring
Schedule

Empty all Holy Water fonts

Hand sanitisers

Cleaning of Door handles,
seats...

Cleaning of Ambo, Shrines
Microphones

Cleaning of Toilet facilities

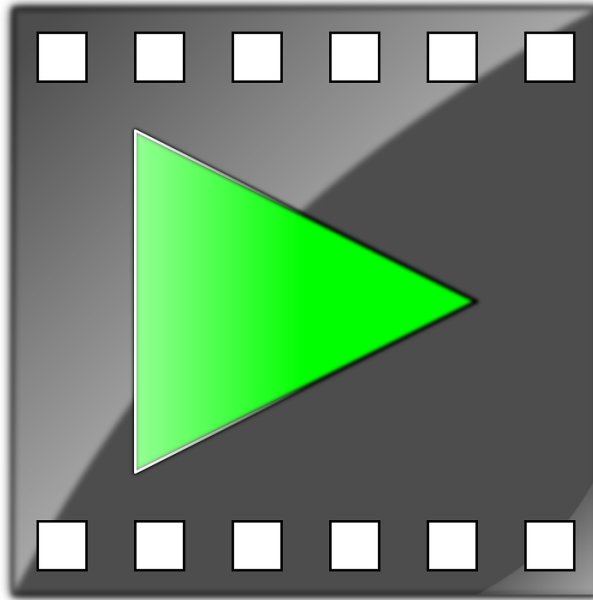
| ACTION | CONFIRM / COMMENT |
|---|-------------------|
| 14. Have all Holy Water fonts been emptied? | |
| 15. If it is decided to continue providing toilet facilities, are these clean and appropriately stocked? | |
| 16. Can doors be kept open when people are arriving and departing from Mass or other celebrations to minimise contact with door handles, etc. and to improve ventilation? | |
| 17. Have sufficient hand sanitisers been provided at all entrances and exits? | |



B. Maintenance of Hygiene contd.

| ACTION | CONFIRM / COMMENT |
|---|-------------------|
| 18. Has the issue of the sharing of missalettes been considered? (reusable prayer books, hymnals, hymn sheets, etc. should not be distributed at this time) | |
| 19. What safe mechanism has been put in place for taking up church collections (e.g. secure and supervised boxes near the doors of the church)? | |
| 20. Have we identified those areas and objects in the church which will require frequent cleaning (i.e. seats, ambo, microphones, shrines, door handles, etc.)? | |
| 21. Has a process been put in place to ensure the regular cleaning of these, including after every gathering? | |
| 22. Is there a schedule for, and appropriate monitoring of general cleaning and sanitising of the church, including the sacristy? | |

Removing facemask safely video from Abbeyfeale



Safely removing a facemask

- Paudie demonstrates how a facemask can be safely removed before receiving holy Communion



*Church of the Assumption
Abbeyfeale*

Liturgical Matters



diocese
of limerick
our catholic community



IRISH CATHOLIC
BISHOPS' CONFERENCE
COMHDHÁIL EASPAG CAITLICEACH ÉIREANN

Liturgical Matters

- Dispensation extended
- Manage sanctuary area
- Limit music ministry & altar servers

- i. The dispensation from the Sunday and Holy Day obligation is extended for the time being.
- ii. Careful consideration should be given to the number of priests and other liturgical ministers that can be safely accommodated in the sanctuary, allowing for physical distancing and ease of movement.
- iii. The sanctuary area should be arranged in such a way that those exercising a liturgical role can do so while respecting the required physical distance.
- iv. Concelebration should be limited, and concelebrants should receive Communion under both kinds using separate chalices or by intinction.
- v. Deacons should continue to proclaim the Gospel and give the Homily, but caution should be exercised regarding ministering at the altar for the time being.
- vi. Parishes are recommended to have designated places for Readers and Extraordinary Ministers of Holy Communion.
- vii. In the interests of physical distancing, parishes may wish, for the time being, to limit music ministry to a single cantor and a single instrumentalist.
- viii. Altar servers should assist only when all physical distancing/hygiene considerations have been taken into account, and with careful supervision.



Liturgical Matters cont.

● Simple Entrance, Recessional and no Offertory Processions

- ix. Regarding processions, the simple Entrance and Recessional format is recommended at this time.
- x. Rather than an Offertory Procession, the gifts of bread and wine should be brought by the celebrant from a credence table, placed near the altar, which will also hold the water bowl and finger towel.
- xi. Care should be taken to avoid the contamination of the hosts which are to be consecrated. It is recommended liturgical practice to consecrate at each Mass a sufficient number of hosts for that celebration only.
- xii. At this time, the optional exchange of the Sign of Peace can be omitted, or offered in a manner which avoids any physical contact.

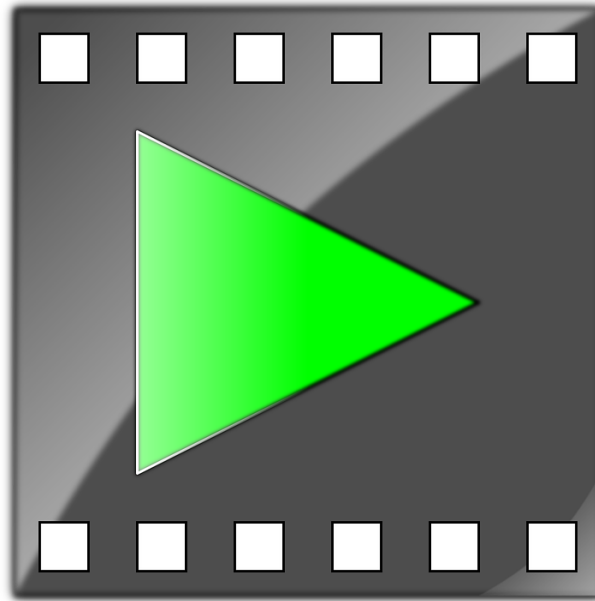
Liturgical Matters cont.

● Protocol for Holy Communion

- xiii. The procession for people approaching for Holy Communion should be carefully planned. Stewards may assist if required.
- xiv. For the time being, it is recommended that Communion should not be given under both kinds, and should be received in the hand.
- xv. Priests and Extraordinary Ministers of Holy Communion should visibly sanitise their hands both before and after the distribution of Communion.
- xvi. Priests and ministers should wear a face-covering while distributing Communion.
- xvii. It is advisable to provide a small table at each point of distribution with a bottle of sanitiser. This would enable the priest/minister to re-sanitise their hands if necessary, during the distribution of Communion.
- xviii. Care should be taken to thoroughly clean all vessels and to change purificators and finger towels after each Mass.



Receiving Holy Communion videos from Abbeyfeale & Kilmallock



Receiving Holy Communion 1

- Fr Tony sanitises his hands and puts on a mask before making his way to edge of the sanctuary
- Abbeyfeale Church are also using a Perspex screen as an additional safety measure



*Church of the Assumption
Abbeyfeale*



Liturgical Matters cont.

● Protocol for Baptism, Anointing, Reconciliation

- xix. At the celebration of the Sacrament of Baptism, the celebrant will sign the child with the Cross without touching.
- xx. A jug of fresh water will be blessed for the Baptism. For the time being, priests may prefer to have only one child (or children from one family) baptised in each ceremony. However, if there are a number of Baptisms in sequence, the same jug of Blessed Water could be used, but water may not be re-used from the font or basin.
- xxi. The anointing with the Holy Oils will be administered by the use of cotton buds.
- xxii. For the Sacrament of Reconciliation, provision should be made in the body of the Church for a confessional area. Consideration should be given to the privacy of the sacrament as well as the requirements of physical distancing and hygiene.

COMMUNICATION

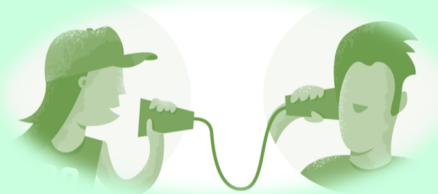
Communications will be essential to inform parishioners of the reopening and the guidance to be adhered to.

Tools to consider:

Social Media



Word of mouth



Local radio



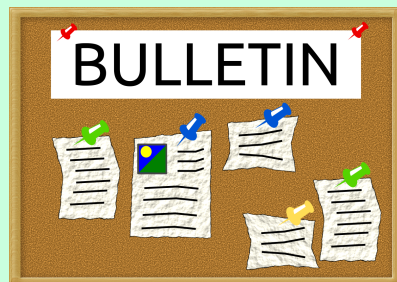
Signage



Parish/Diocesan website



Parish Newsletter/Notice board





diocese
of **limerick**
our catholic community



IRISH CATHOLIC
BISHOPS' CONFERENCE
COMHDHÁIL EASPAG CAITLICEACH ÉIREANN